



Footprint Trust

Newsletter 9

Autumn 2006

Wet n Wild - the water issue.....

The Footprint Trust is an educational charity based on the Isle of Wight.

Set up in 2002 to reduce the ecological footprint of the Island.

The last two dry winters and record heat levels have all taken their toll on water resources.

“Many people on the Isle of Wight have become experts when it comes to water-saving ideas!”

Says Ray Harrington-Vail of the Footprint Trust’s Waterworks project.

“We have been told of all kinds of ingenious and simple ideas

including changing plumbing so that bathwater goes into a waterbutt rather than to waste.”

Collecting the cold water from the hot tap for watering plants or for rinsing the sink are other ideas people have suggested.

The Footprint Trust has produced an easy to understand ‘tips leaflet’ aimed at householders and gardeners. This is available from Ventnor Botanic Garden, libraries and the Riverside Centre.



Water for fun...

Fluidmaster® conversion kits change a standard lever flush toilet into a light touch push button system. The system uses much less water than standard valves. They cost around £16 from plumbers merchants.

Large tank waterbutts are now available. They hold a staggering 750 litres – 150 gallons - of water.

Tel. 0870 787 1413.

Inside this Issue...

Save £££s on Cavity Wall Insulation

Get active with Green Gym..

Schools Eco-Challenge

Charity recycling guide info...



Water for life...

Wind facts....

The UK is the windiest country in Europe. The wind blows in Britain 2 days out of 3.

Research by Oxford University focused on wind patterns over many decades. Their scientific research revealed that wind is at its peak during main surges in demand for electricity.

www.ouce.ox.ac.uk

This information was published a year ago but has not been widely publicised.

The Footprint Trust believes that the biggest threat to the landscape, people and wildlife of the Isle of Wight is climate change. Thus dependency on fossil fuels must be reduced.



Water and Climate Change...

The Trust promotes sustainable living, energy efficiency and supports investment in new technologies.

Insulation special offer for Islanders

Before considering fitting double glazing or solar power make sure that your home is not wasting 30% of its heat through the walls. Whilst many homes have loft insulation often cavity wall insulation is overlooked.

The IW Council have negotiated a very good deal for homeowners whereby they can get cavity wall insulation for a fraction of the normal price.

For a cost of around £250 you could get this work done and you will feel the difference this coming winter.

With fuel prices escalating you could repay the cost within two winters.

Those in receipt of certain benefits can get the work done for free.

For more information or to get a quote please call Millfold on 0800 592200 stating reference BG-IOW.



All set for a cold winter??

Eco Facts.....

100,000 gallons of water are used to make a car...
a gallon of petrol took 70 gallons of water to manufacture

Gallon = 4.5 litres

A dripping hot tap could cost you £70 per year in water and fuel costs

The average windturbine in the UK kills one bird a year—the average UK cat kills 35 birds a year

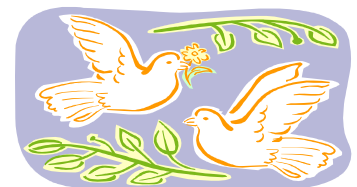
Green Gym

The Isle of Wight Green Gym is continuing to hold their weekly sessions each Wednesday throughout the autumn and winter. Many of these will be on sites in West Wight, including Ningwood, Fort Victoria Country Park, Yarmouth and Afton Marsh near Freshwater.

There are a variety of tasks being undertaken which will include scrub management, coppicing and pathway clearance.

This work will help to improve access for the public and will assist in the conservation of wildlife including dormice, red squirrels, bats, birds and butterflies.

To take part in any Green Gym activity you need no previous experience in this work as training is part of the session. You will need stout footwear and appropriate clothing, other than that just come along and you will be made very welcome by the group whatever your ability, age, or skill level.



Green Gym—helping the birds and butterflies...

For more details visit www.footprint-trust.co.uk and follow the links for Green Gym or call Colin Withers on 866459.

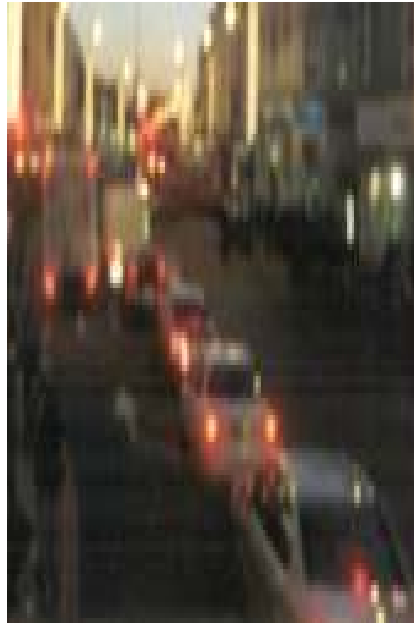
Schools and parents taking up Green Challenge...

Over the past 20 years, the percentage of children travelling to school by car has doubled: 41% of primary and 24% of secondary age children are now driven to school each day¹.

Most of these journeys are less than two miles. Between 8am and 9am during term time 12% of car trips by residents of urban areas were generated by the school run in 2002¹. This causes major congestion and safety issues on the routes to school and around school gates.

If you are interested in encouraging your children to be more active, in cutting congestion outside schools, and making the environment cleaner then get involved with School Travel Plans.

Travel plans for schools are community-led; local people looking at issues in their area, and devising their own plan to ensure action is sustained. They are not about eliminating the use of the car, but about delivering positive benefits which can include:-



- More children walking and cycling, where appropriate, thereby easing congestion outside schools, making the environment safer and cleaner, and children (and their parents/carers) healthier.

- More people wanting to use footpaths or cycle routes, which can help attract funding for improvements and lead to greater accessibility for all members of the community.
- More people wanting to use, for example, a bus service which may help build a business case.
- The voice of the community is strengthened, findings being fed into other bids or documents such as Parish Plans.

Successful projects include Shalfleet Primary, Solent Middle, and The Priory independent school.

If you are interested in developing a school travel plan please contact Helen Stichbury on 821000. Helen.stichbury@iow.gov.uk

¹ Department for Transport National Travel Survey 2002 update

The Footprint Trust works with schools in helping them reduce their ecological footprint. If you would like the Trust to visit your school please contact them on 822282 or email ray@footprint-trust.co.uk

Recycling Guide to be launched

Every wondered what to do with those unwanted Christmas gifts and can't be bothered to sell them on eBay?

There is a charity shop or an organisation near you who may want your foreign coins and even Victoria Beckham's autobiography!

Thanks to funding from the Leader + programme the Footprint Trust have been able to publish details as to what local charity shops want.

The Island is already ahead of most other places when it comes to household recycling.

But there are many items that are discarded such as furniture that could be reclaimed.

But please note ...charity Shops should not be seen as a rubbish dump. Please only give things of good quality. The shops have to pay to get rid of trash.

The *Storeroom* project wishes to hear from any hotel or household which is disposing of furniture. Tel 869085

Love Russia in Castle Road, Newport wants ink cartridges and music CDs.



Teddy can have a new home at Oxfam...

For more information visit; www.footprint-trust.co.uk/recycling.htm

A leaflet is also available from libraries.

The Footprint Trust

Riverside Centre
Newport
Isle of Wight
PO30 2QR

Phone 01983 822282

www.footprint-trust.co.uk



Say No to Brazilian

Be aware there may be a dangerous thing in the stationery cupboard, no.. not Mr Smith from accounts but your photocopier paper!

So-called 'sustainable' paper from Brazil is often harvested from introduced Eucalyptus tree plantations that support little wildlife and displace local people. It is then transported thousands of miles to the UK.

Say No to 'paper miles' buy paper from the UK or Europe.

Making recycled paper uses less energy and water than virgin paper—overall it also creates less pollution...

Living Village for Smallbrook?

The Footprint Trust has tentatively welcomed proposals to build EcoHomes on a site at Pennyfeathers on the outskirts of Ryde. The majority of the site would be open space with planting of native trees and other green features.

The railway station would be upgraded and community facilities put in place.

To see the plans please visit; www.pennyfeathers.com

The Footprint Trust is supported by EU Leader + and I.W. AONB Project



The views expressed in this newsletter are not necessarily those of the Footprint Trust or our partners. Mention of any product or service does not imply endorsement. We are not responsible for the contents of internet sites.

The Footprint Trust Ltd is a not-for-profit company limited by guarantee.
Registered Company No. 04587815. Registered Charity No. 1106024.

Printed on evolve British recycled paper by Crossprint of Newport.